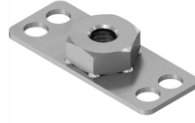


SF1-ST38A M4

SF1-ST38A M5

SF1-ST38A M6

SF1-ST38A M8

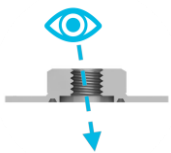


Description

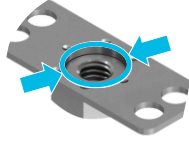
bigHead fastener with an internally threaded hex fixing welded to a sighted 38 x 15 mm rectangular perforated Head. Suitable for surface bonding applications requiring:

- A connection point on the reverse side of the material, for through-material installation of secondary fastening elements
- Thread engagement up to 1d

Key features



Sighted Head



Perforated head design

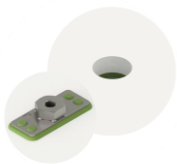
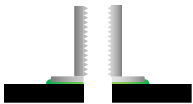


bigHead hex fixing geometry



316 stainless steel construction, self colour finish

Intended usage



Alternative configurations may be possible using this product.

Please contact bigHead for further advice.

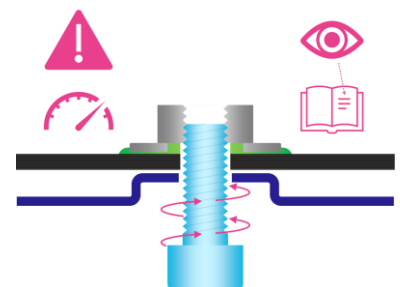
Surface bonding, open reverse socket

Fastening functionality

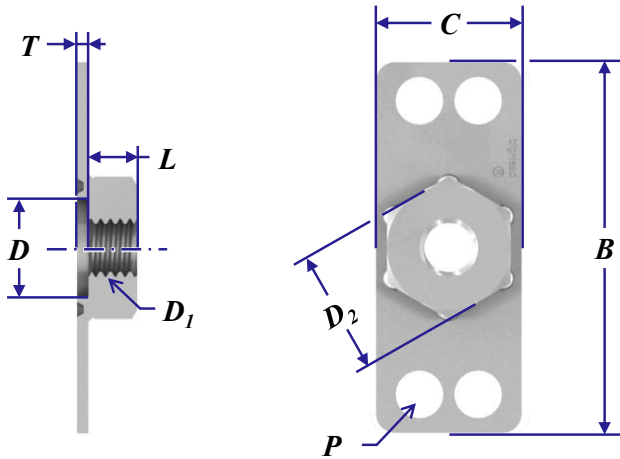
Provides an internally threaded connection point for assembling threaded screws and similar secondary fasteners into.



Torque tightening & preload during assembly: these products require specific consideration, please see torque & preload guidance section.



Nominal dimensions (mm)



Product code	D1	D (Ø)	L	D2	T	B	C	Typical min. weight (g)
SF1 ST38A M4	M4 x 0.70	10	5	12.7	1.2	38	15	6
SF1 ST38A M5	M5 x 0.80	10	5	12.7	1.2	38	15	7
SF1 ST38A M6	M6 x 1.00	10	5	12.7	1.2	38	15	7
SF1 ST38A M8	M8 x 1.25	10	6	13.0	1.2	38	15	10

Common to all:

Thread class: 6H post finish
 P - 4 perforation holes

Design & application guidance

Thread size	Tightening torque			Loadability (Weld)	Clearance holes
	Max. tightening torque (Nm)				
	<i>Friction coefficient:</i>				
	0.1	0.2	0.3		
M4	0.9	1.4	1.7	3.6	4.5
M5	1.6	2.6	3.3	3.1	5.5
M6	2.9	4.6	5.7	3.3	6.6
M8	7.1	11.2	13.9	3.1	9.0

Based on VDI 2230, 90% utilisation of yield strength. Valid only for intended usage configuration.

Applicability depends on the assembly system friction coefficient, which may vary according to the secondary fastener(s) specification.

For guidance only, determination of correct assembly parameters may require specialist expertise.

Always conduct suitable torque/preload calculation and appropriate validation for the intended assembly design.

Weld load limit (WLL):

bigHead is not liable for failures arising from excessive tensile loading or assembly preloading of their products.

ISO 273 "medium" clearance hole basis.

Please contact bigHead for further guidance if you are unsure about these topics.

Disclaimer

The information within this document is for guidance purposes only and does not constitute a guarantee or warranty of any kind.

bigHead cannot accept liability for performance arising from use of these products.

Always perform appropriate testing and evaluation to determine application suitability.

Illustrations and diagrams are for illustrative purposes only and may differ from actual products.

Further information & contact details

For further information about these products, or for technical support inquiries, please contact us:

www.bighead.co.uk/the-techub/

Tech@bighead.co.uk

+44 (0)1202 583 696

bigHead Bonding Fasteners Ltd

Unit 1, Black Moor Business Park

36A Black Moor Road

Ebblake Industrial Estate

Verwood

Dorset

United Kingdom

BH31 6BB