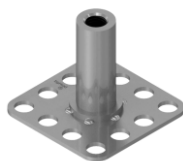


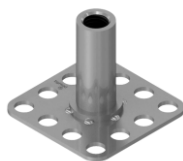
F2-B32 M4



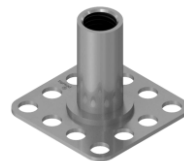
F2-B32 M5



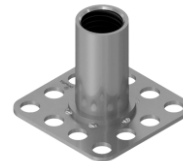
F2-B32 M6



F2-B32 M8



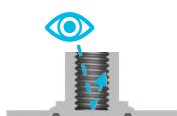
F2-B32 M10



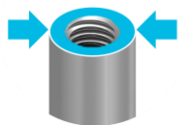
Description

bigHead fastener with an internally threaded collar fixing welded to a blind 32 x 32 mm square perforated Head. Suitable for surface bonding applications requiring a standoff with defined height.

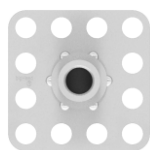
Key features



Blind Head



Collar diameter to suit ISO 273 clearance holes



Perforated head design

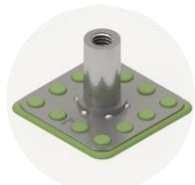
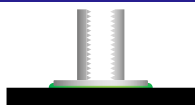


Shouldered collar geometry



Carbon steel construction, bright zinc plate finish

Intended usage



Surface bonding, standoff

Alternative configurations may be possible using this product.

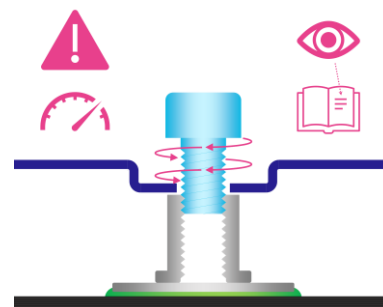
Please contact bigHead for further advice.

Fastening functionality

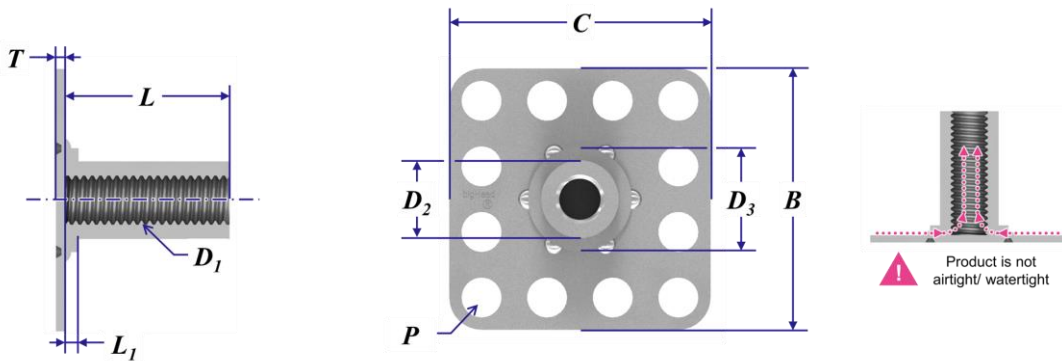
Provides an internally threaded connection point for assembling threaded screws and similar secondary fasteners into.



Torque tightening & preload during assembly: these products require specific consideration, please see torque & preload guidance section.



Nominal dimensions (mm)



| Product code | D1 | D2 (Ø) | D3 (Ø) | L | L1 | T | B | C | Typical min. weight (g) |
|--------------|------------|--------|--------|-----------------------------|-----|-----|----|----|-------------------------|
| F2 B32 M4 | M4 x 0.70 | 6.3 | 10.0 | Nominal thread length value | 1.6 | 1.2 | 32 | 32 | 10 |
| F2 B32 M5 | M5 x 0.80 | 9.5 | 12.7 | | 1.6 | 1.2 | 32 | 32 | 12 |
| F2 B32 M6 | M6 x 1.00 | 9.5 | 12.7 | | 1.6 | 1.2 | 32 | 32 | 12 |
| F2 B32 M8 | M8 x 1.25 | 11.0 | 16.0 | | 1.6 | 1.2 | 32 | 32 | 14 |
| F2 B32 M10 | M10 x 1.50 | 12.7 | 16.0 | | 1.6 | 1.2 | 32 | 32 | 12 |

Common to all:

Thread class: 6H post finish
 P - 12 perforation holes, equally spaced square array

Design & application guidance

| Thread size | Tightening torque | | | | Loadability (Fixing) Max. tensile load (kN) | Loadability (Weld) Max. tensile load (kN) | Clearance holes Max. recommended hole size (mm) |
|-------------|-----------------------------|------|------|------|--|--|--|
| | Max. tightening torque (Nm) | | | | | | |
| | Friction coefficient: | | | | | | |
| | 0.08 | 0.10 | 0.12 | 0.14 | | | |
| M4 | 0.8 | 1.0 | 1.1 | 1.2 | 4.9 | Contact bigHead | 4.5 |
| M5 | 1.7 | 1.9 | 2.2 | 2.4 | 9.7 | Contact bigHead | 5.5 |
| M6 | 2.8 | 3.3 | 3.7 | 4.1 | 9.6 | 6.3 | 6.6 |
| M8 | 6.9 | 8.0 | 9.1 | 10.1 | 8.2 | Contact bigHead | 9.0 |
| M10 | 13.6 | 16.1 | 18.3 | 20.3 | 13.5 | 7.4 | 11.0 |

Based on VDI 2230, 90% utilisation of yield strength. Valid only for intended usage configuration.

Applicability depends on the assembly system friction coefficient, which may vary according to the secondary fastener(s) specification.

For guidance only, determination of correct assembly parameters may require specialist expertise.

Always conduct suitable torque/preload calculation and appropriate validation for the intended assembly design.

Fixing load limit (FLL):

To avoid failure of the bigHead fastener, do not exceed stated loadability limits during in-service mechanical loading or assembly preloading.

Weld load limit (WLL):

bigHead is not liable for failures arising from excessive tensile loading or assembly preloading of their products.

ISO 273 "medium" clearance hole basis.

Please contact bigHead for further guidance if you are unsure about these topics.

Disclaimer

The information within this document is for guidance purposes only and does not constitute a guarantee or warranty of any kind.

bigHead cannot accept liability for performance arising from use of these products.

Always perform appropriate testing and evaluation to determine application suitability.

Illustrations and diagrams are for illustrative purposes only and may differ from actual products.

Further information & contact details

For further information about these products, or for technical support inquiries, please contact us:

www.bighead.co.uk/the-techub/

Tech@bighead.co.uk

+44 (0)1202 583 696

bigHead Bonding Fasteners Ltd

Unit 1, Black Moor Business Park
36A Black Moor Road
Ebbleke Industrial Estate
Verwood
Dorset
United Kingdom
BH31 6BB