

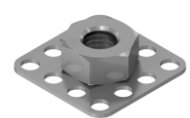
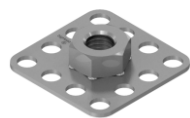
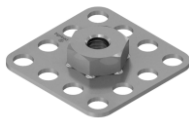
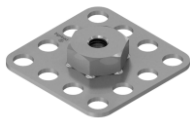
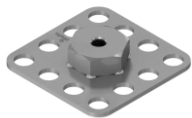
F1-S32 M4

F1-S32 M5

F1-S32 M6

F1-S32 M8

F1-S32 M10

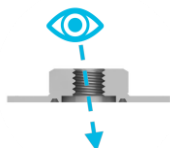


Description

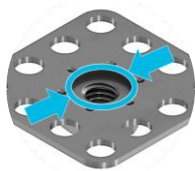
bigHead fastener with an internally threaded hex fixing welded to a sighted 32 x 32 mm square perforated Head. Suitable for surface bonding applications requiring:

- A connection point on the reverse side of the material, for through-material installation of secondary fastening elements
- Thread engagement up to 1d

Key features



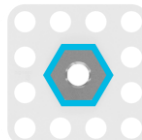
Sighted Head



Perforated head design



bigHead hex fixing geometry (applies to M4 to M8 thread)

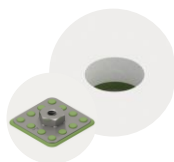
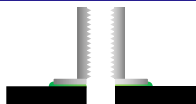


DIN 934 nut fixing geometry (applies to M10 thread)



Carbon steel construction, bright zinc plate finish

Intended usage



Alternative configurations may be possible using this product.

Please contact bigHead for further advice.

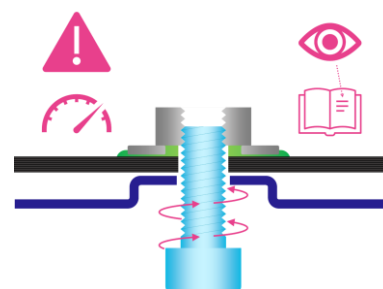
Surface bonding, open reverse socket

Fastening functionality

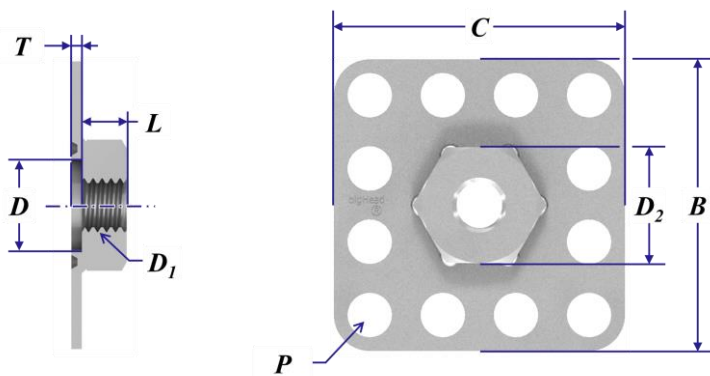
Provides an internally threaded connection point for assembling threaded screws and similar secondary fasteners into.



Torque tightening & preload during assembly: these products require specific consideration, please see torque & preload guidance section.



Nominal dimensions (mm)



Product code	D1	D (Ø)	L	D2	T	B	C	Typical min. weight (g)
F1 S32 M4	M4 x 0.70	10	5	12.7	1.2	32	32	9
F1 S32 M5	M5 x 0.80	10	5	12.7	1.2	32	32	10
F1 S32 M6	M6 x 1.00	10	5	12.7	1.2	32	32	10
F1 S32 M8	M8 x 1.25	10	6	13.0	1.2	32	32	14
F1 S32 M10	M10 x 1.50	13	8	17.0	1.2	32	32	12

Common to all:

Thread class: 6H post finish

P - 12 perforation holes, equally spaced square array

Design & application guidance

Thread size	Tightening torque				Loadability (Weld)	Clearance holes		
	Max. tightening torque (Nm)						Max. tensile load (kN)	Max. recommended hole size (mm)
	Friction coefficient:							
	0.08	0.10	0.12	0.14				
M4	0.8	1.0	1.1	1.2	Contact bigHead	4.5		
M5	1.7	1.9	2.2	2.4	6.5	5.5		
M6	2.8	3.3	3.7	4.1	5.5	6.6		
M8	6.9	8.0	9.1	10.1	Contact bigHead	9.0		
M10	13.6	16.1	18.3	20.3	4.8	11.0		

Based on VDI 2230, 90% utilisation of yield strength. Valid only for intended usage configuration.

Applicability depends on the assembly system friction coefficient, which may vary according to the secondary fastener(s) specification.

For guidance only, determination of correct assembly parameters may require specialist expertise.

Always conduct suitable torque/preload calculation and appropriate validation for the intended assembly design.

Weld load limit (WLL):

bigHead is not liable for failures arising from excessive tensile loading or assembly preloading of their products.

ISO 273 "medium" clearance hole basis.

Please contact bigHead for further guidance if you are unsure about these topics.

Disclaimer

The information within this document is for guidance purposes only and does not constitute a guarantee or warranty of any kind.

bigHead cannot accept liability for performance arising from use of these products.

Always perform appropriate testing and evaluation to determine application suitability.

Illustrations and diagrams are for illustrative purposes only and may differ from actual products.

Further information & contact details

For further information about these products, or for technical support inquiries, please contact us:

www.bighead.co.uk/the-techub/

Tech@bighead.co.uk

+44 (0)1202 583 696

bigHead Bonding Fasteners Ltd

Unit 1, Black Moor Business Park

36A Black Moor Road

Ebblake Industrial Estate

Verwood

Dorset

United Kingdom

BH31 6BB