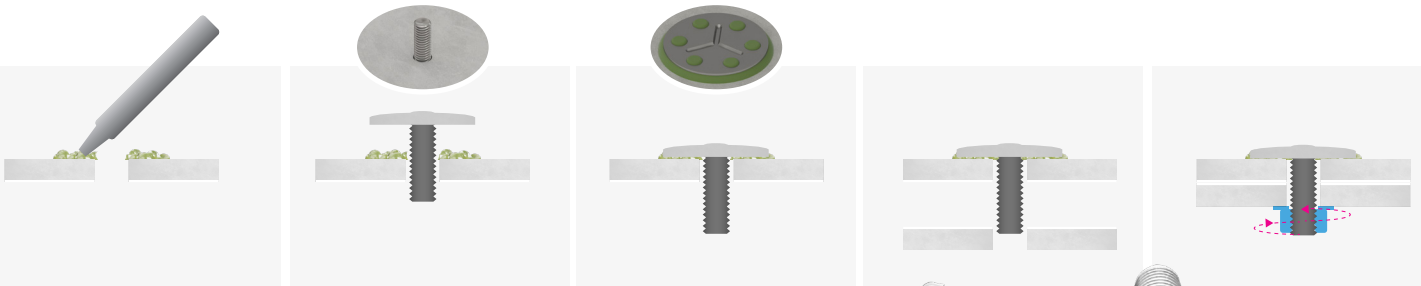


## SURFACE BONDING CASE STUDY

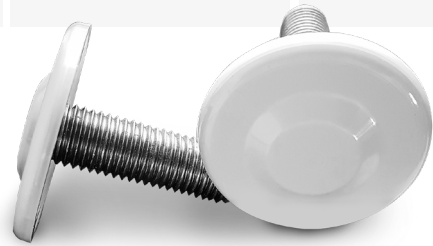
### Wind turbine nacelle fastener



Specially developed bigHead® product with polymer encapsulated Head for adhesively bonding through windturbine nacelle components.



**Complete development** – we work in partnership to develop and validate solutions for use in demanding applications and environments



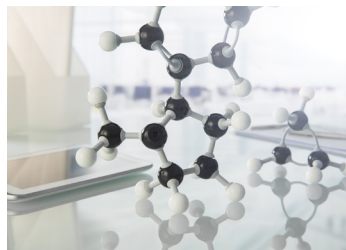
## WHY BIGHEAD?

### Our Designed Together approach



#### Applications understanding

We help you define your requirements and rigorously test out ideas – checking and validating according to criteria relevant to you



#### Materials & process expertise

We understand materials and manufacturing processes – we partner with manufacturing experts to realise designs that go beyond the norms



#### Commitment to quality

From geometry performance and durability specifications, to specific packaging requirements – we deliver on the details that ensure your success